



WISKIND

# WISKIND CLEANROOM INTEGRATED SOLUTIONS



# CONTENTS

01	<b>Wiskind Cleanroom</b>	<b>02</b>
	Global Layout	02
	Manufacturing Base	03
	R&D Capabilities	04
	Production Management System	06
	Automatic Production Lines for Conventional Products	07
02	<b>Cleanroom Products</b>	<b>12</b>
	Cleanroom Panel	12
	Endure® Panel	14
	HygiSteel® Panel	15
	PCGI Panel	16
	HPL Panel	17
	Cleanroom Door	18
	Cleanroom Window	19
	Modular Ceiling System	20
	Cleanroom Equipment	22
	Cleanroom Light	30
03	<b>Cleanroom Solutions</b>	<b>34</b>
	Biomedical Cleanroom Enclosure System Solutions	34
	One-piece Corner Panel	36
	Removable Panel	37
	Air Return Wall Unit	38
	Industrial Cleanroom Enclosure System Solutions	40
	Stainless Steel Waterproof Wall Base	44
04	<b>Cooperative Partners</b>	<b>46</b>
	Cases	46
	Our Partners	52

# GLOBAL LAYOUT

Wiskind Cleanroom provides comprehensive, one-stop cleanroom product solutions for biological and industrial clients. With a California office and large warehouse, we leverage 45+ years of manufacturing expertise and three global production facilities to ensure prompt, complete service for factory owners, engineering companies, and distributors. We leverage automation to streamline production, ensuring precise, consistent quality within each production run and repeatable processes for every subsequent order.



# MANUFACTURING BASE

## MANUFACTURING AND R&D BASE



Boxing, Shandong



Zhengjiang, Jiangsu



Chengdu, Sichuan

## The 1st Digital Manufacturing Base in Clean Industry



Wiskind, in partnership with Siemens, a global leader in industrial automation, has built the cleanroom industry's first digitally advanced factory leveraging Industry 4.0 principles.

- 300% increase in order response speed
- 6-8 times higher production efficiency with an annual capacity of 65 million square feet
- ensuring uniformity in every purification plate



## R&D CAPABILITIES

The Wiskind Innovation Center comprises a large-scale comprehensive R&D test field and a four-story scientific research building, with a total area of 54,000 square feet. It serves as an integrated complex for R&D experiments and office functions. Equipped with over 40 sets of professional equipment, the center is capable of conducting 32 types of experiments, including architectural physics, organic chemistry, structural mechanics, and clean space technologies. It stands as one of the most authoritative and comprehensive laboratories within the industry. Wiskind has established strategic partnerships with high-end brand suppliers such as Baosteel, Yehui, BlueScope, Maanshan Iron and Steel, and BASF, and has set up joint innovation laboratories. These collaborations provide complete testing conditions necessary for the development of high-quality building products. Additionally, Wiskind has obtained professional certification from the China Construction Metal Structure Association.

### Metal Material Detection

Coating flexibility  
Tensile strength  
Coating thickness  
Plating thickness  
Color difference detection  
Pencil hardness  
Coating adhesion  
Salt spray resistance, acid and alkali resistance  
UV lamp aging performance

### Product Inspection

Bond strength  
Peel properties  
Bending capacity

### Auxiliary Material Detection

Rock wool density  
Thermal conductivity  
Compressive strength  
Oxygen index  
Smoke density  
Hydrophobicity

### Solution Detection

Moisture content  
Bond strength



- Recognized as one of the most authoritative and complete laboratories in the industry.
- 40+ sets of cutting-edge equipment deliver state-of-the-art testing.
- Offers material testing for up to 32 items, spanning a broad range of analyses.
- Established strategic partnerships with more than 20 high-end brand suppliers, fostering innovation and quality assurance.

## PRODUCTION MANAGEMENT SYSTEM

### LEAN MANAGEMENT MODEL

With ongoing development and expansion, Wiskind introduced and implemented Total Productive Maintenance (TPM) in 2007. This initiative established a factory management system and method with replicable capabilities, significantly enhancing the modern management standards of the enterprise.

Statistics indicate that since the implementation of TPM management, the product qualification rate has risen from an

initial 95% to 99%. A total of 19,127 improvements have been made, resulting in economic benefits of approximately 5 million USD in creation or savings. The company has become a benchmark enterprise for factory construction in the region.

Wiskind's facilities serve as a learning hub and are frequently visited by other businesses, Wiskind's factory management training has earned significant recognition in the industry.

### 2007

Introduced and implemented TPM (total production and maintenance) management in 2007

### 99%

The product qualification rate has seen a substantial increase, rising from an initial 95% to an impressive 99%

### 19,127

19127 improvement cases in total

### 5,000,000

Creating or saving an economic benefit of 5,000,000 USD in total

### QUALITY MANAGEMENT SYSTEM CERTIFICATION

In recent years, Wiskind has continuously promoted the extension of quality management to the entire supply chain and the entire product life cycle by strengthening the quality management system certification. Up to now, Wiskind has obtained the certification of ISO9001:2015 international quality management system, ISO14001:2015 international environmental management system, and GB/T45001-2020 occupational health and safety management system.

Wiskind has also obtained the EU CE certification, which indicates that the product or service has passed the compliance assessment and gained certification in the fields of quality, health and safety, environment, and social responsibility.

At the same time, Wiskind also took the lead in obtaining the production license and QS quality safety mark issued by the State Bureau of Quality and Technical Supervision in the same industry in China.



Obtained ISO9001:2015 international quality management system



Obtained ISO14001:2015 international environmental management system



Obtained GB/T45001-2020 occupational health and safety management system certification



Obtained production license and QS quality safety mark

## AUTOMATIC PRODUCTION LINES FOR CONVENTIONAL PRODUCTS

### AUTOMATIC PRODUCTION LINE FOR CONVENTIONAL PRODUCTS

The cleanroom panel continuous production system, independently developed by Wiskind, has reached the international advanced level, with a total length of more than 150 meters. It comprises the following components: a rolling hot pressing system, rockwool board automatic cutting system, automatic glue spraying system, double-track temperature control system, and robot palletizing system.

This system features a high degree of automation, rapid processing efficiency, and stable product quality. The maximum annual production capacity is 2 million square meters. It is capable of producing a variety of cleanroom panels with different core materials. The introduction of the automatic production line for cleanroom panels has revolutionized the industry's understanding of the traditional production process for cleanroom panels.



## MANUFACTURING PROCESS

01

### Rockwool Board Automatic Cutting System

The independently developed rockwool board slitting equipment uses a high-precision saw blade for cutting, ensuring that the thickness error is controlled within 200 $\mu$ m (the diameter of a hair strand is 80  $\mu$ m). The rockwool is staggered, which significantly enhances the strength of the cleanroom panel.

02

### Rolling Hot Pressing System

The rolling hot pressing system operates synchronously with multiple motors to ensure that the panel forming accuracy is controlled within 0.5mm. The panel's processing width and thickness can be automatically adjusted according to customer requirements.

03

### Automatic Glue Spraying System

The glue is accurately fed according to the required proportion through frequency converter control, ensuring it is completely and evenly applied to the plate surface. This process guarantees the high-strength bonding of the product.

04

### Double Track Temperature Control System

The dual-track circulating hot pressing process ensures that the cleanroom panel is evenly heated and maintains perpendicularity to all four sides, guaranteeing installation accuracy.

05

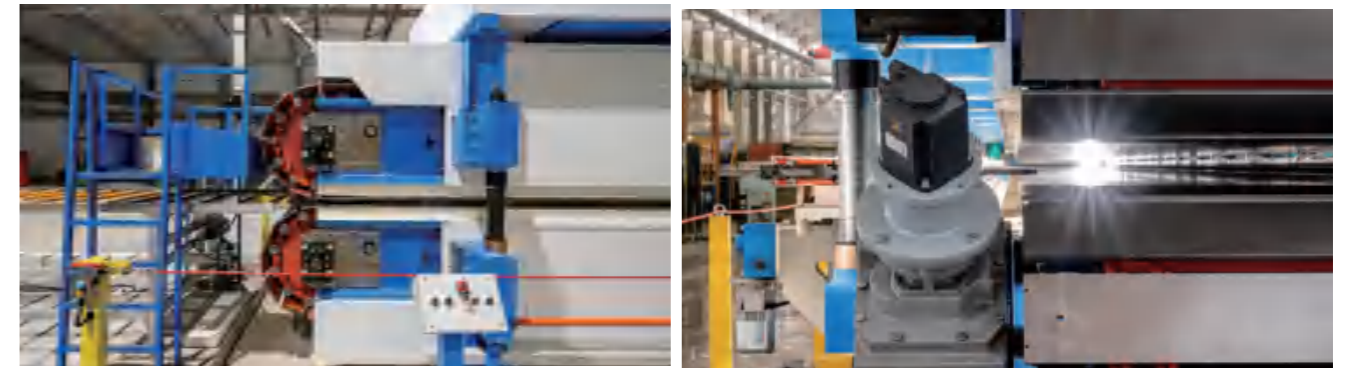
### Robot Palletizing System

The fully automated robot is used for stacking at a faster speed, which makes the process more efficient. Through accurate measurement and intelligent control, the precision, strength, and flatness of the cleanroom panel are greatly improved.

## DOUBLE TRACK HOT PRESSING SYSTEM

This system adopts high-end imported equipment from Robor, Italy. The double track features a solid steel structure frame that is heat-treated to ensure dimensional stability during production. The super-long double track ensures the product's flatness. Heating is carried out by two complete independent systems, and the upper and lower tracks are sealed with heat shields to ensure that the production process reaches the required temperature. To avoid deflection and deformation, a fixed base is equipped every 2.5 meters.

- Advanced design for long-term and large-scale intensive operation.
- Outstanding manufacturing accuracy.
- Precise and unique assembly materials.
- Excellent synchronous operation.
- Ultra-long stable operation.
- Control system integrated with digital management.



### Flexible Automatic Production Line

Wiskind's intelligent automatic production line consists of 8 modules: steel plate leveling, intelligent design, intelligent layout, automatic cutting, automatic bending and forming, precise glue distribution, composite pressing, and finished product stacking, with a total length of more than 170 meters.

Throughout the entire production process, there is no need for manual calculation, measurement, or operation adjustment. The fully automatic production process revolutionizes the non-standard traditional production methods, enhances material utilization rates, minimizes manual intervention, and significantly improves the precision, strength, flatness, and aesthetics of the cleanroom panels, thereby ensuring more stable product quality.

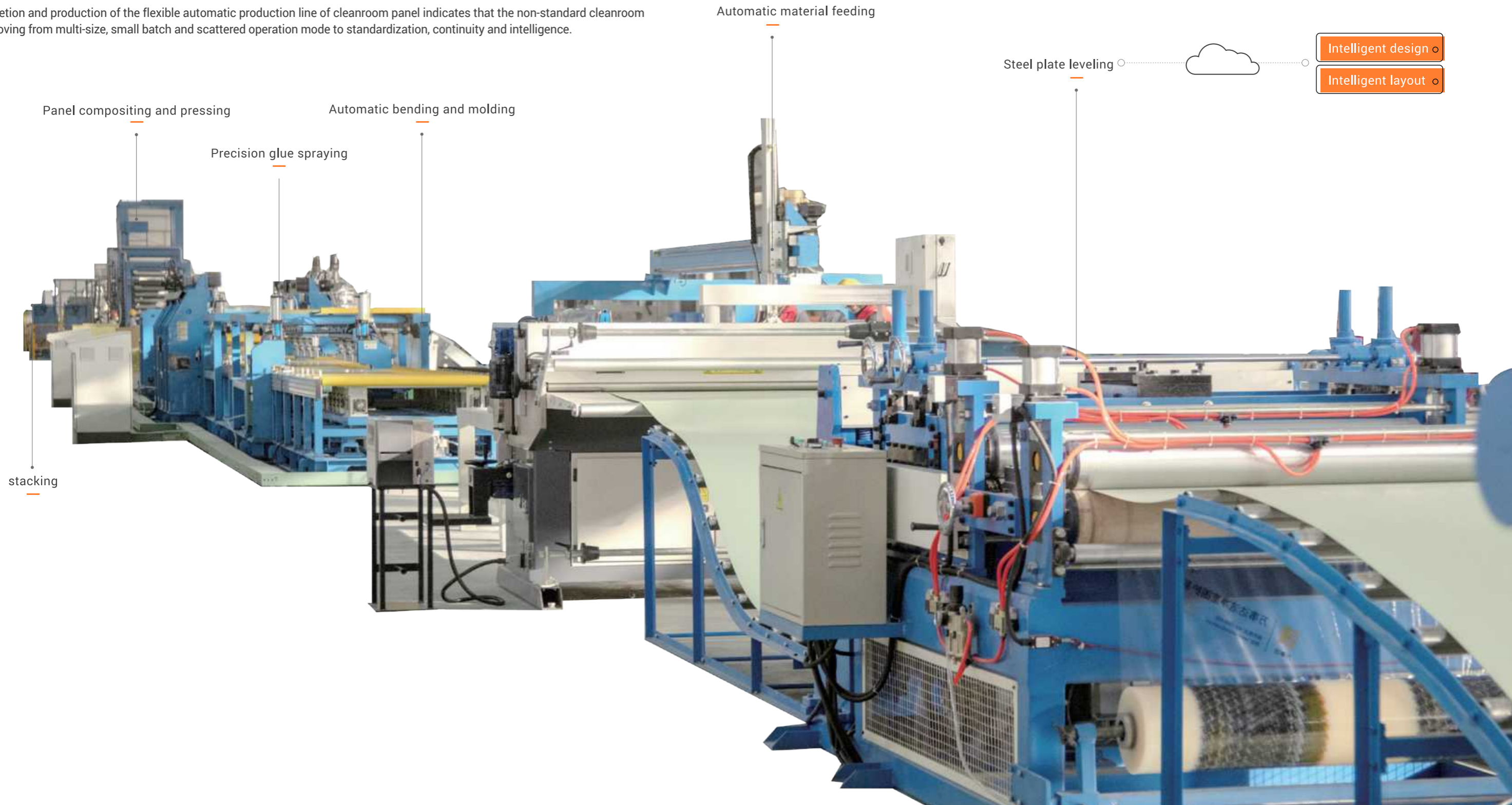
The completion and production of the flexible automatic production line of cleanroom panel indicates that the non-standard cleanroom panel is moving from multi-size, small batch and scattered operation mode to standardization, continuity and intelligence.

8

All eight steps are automated

170+

The total length is more than 170 meters



- Intelligent design
- Intelligent layout

# CLEANROOM PANEL

The company provides and develops a range of materials for cleanroom construction. The product series includes rock wool cleanroom panels, cleanroom MGO panels combined with rockwool, gypsum rockwool cleanroom panels, aluminum honeycomb cleanroom panels, and paper honeycomb cleanroom panels. Additionally, for the biopharmaceutical industry, we have introduced two series: Endure and HigySteel. These offerings provide customers with more options.



- 01. Rockwool panel
- 02. MGO panel
- 03. Gypsum panel
- 04. Aluminium honeycomb panel
- 05. Paper honeycomb panel
- 06. PIR/PUR panel

## PRODUCT SPECIFICATIONS

Item	Specifications
Width	38.58 inch / 46.46 inch
Length	Wall panels: 3.94 inch - 354.33 inch
Thickness	1.97 inch / 2.95 inch / 3.94 inch
Panel thickness	0.016 inch - 0.024 inch
Panel material	Color-coated steel plate, Aluminum alloy plate, Stainless steel plate, Ti-Zn plate
Face coat	PE (polyester), PVDF (fluorocarbon), HDP(high durable polyester)
Core material	rockwool glass and magnesium, gypsum, paper honeycomb, aluminum honeycomb
Thickness of keel	0.024 inch - 0.031 inch
Corner	0.02 inch (Galvanized)
Protective film	2.36 - 3.15 mil

Note: Non-standard specifications can be customized according to customer requirements.

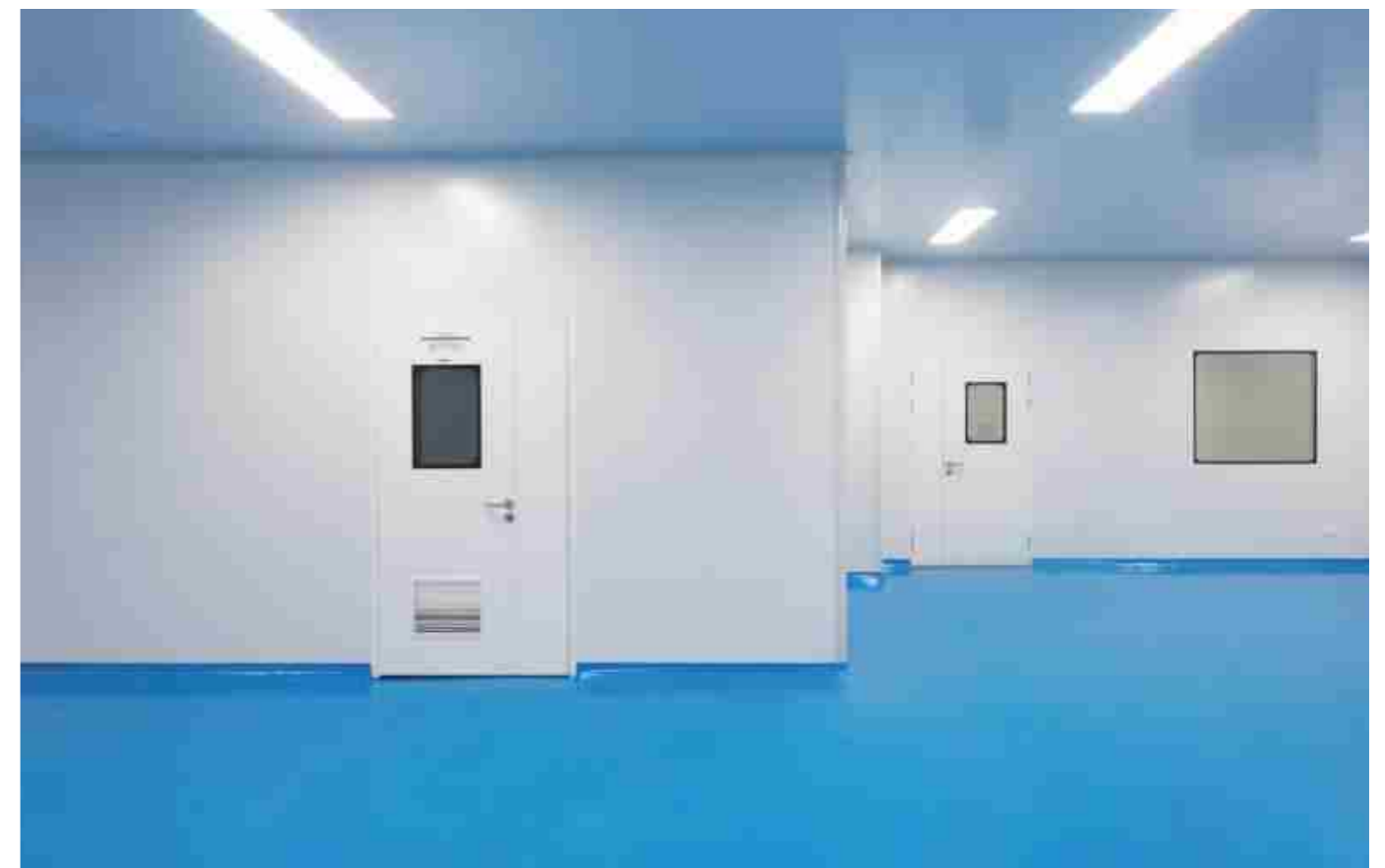
## MATERIAL SPECIFICATIONS

Item	Rock Wool Core Board	Magnesium-Rock Wool Core Board	Sulfur Oxide Magnesium Core Board	Aluminum Honeycomb Core Board
Panel Weight	3.69 lb/ft <sup>2</sup>	3.48 - 4.71 lb/ft <sup>2</sup>	-	2.05 - 3.07 lb/ft <sup>2</sup>
Core Material Spec	6.24 - 7.49 lb/ft <sup>3</sup>	0.2 inch	0.37 inch	-
Sound Insulation	25 dB	30 dB	30 dB	18 dB
Bending Load-bearing Capacity	0.159 psi	0.181 psi	0.181 psi	0.145 psi
Thermal Conductivity Coefficient	-	0.1819 BTU/hr-ft <sup>2</sup> ·°F	-	-
Hydrophobic Rate	≥98%	-	-	-
Fire Resistance Limit	60 min	60 min	-	40 min

Note: The panel weight is calculated based on a 50mm panel thickness. Fire resistance limit test in accordance with GB/T 9978.1-2008.

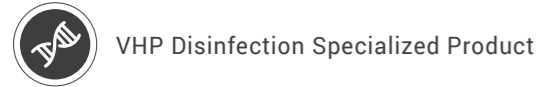
## QUALITY ASSURANCE

In compliance with UL 263:2022  
 In compliance with ASTM E72-22



# ENDURE® PANEL

The Endure panel is primarily used for the production of biological products, blood products, and vaccines within Class B clean room areas. It is suitable for environments that undergo VHP (Vaporized Hydrogen Peroxide) disinfection, alcohol wiping, and bromine geranium wiping. The Endure panel is a specialized panel designed for biological cleanrooms.



## PRODUCT SPECIFICATIONS

Item	Specifications
Width	38.58 inch, 46.46 inch
Thickness of panel surface	0.022 inch
Zinc content	5.75 ounces per square yard
Coating thickness	4.72 mil
Panel surface material	Hot Melt Adhesive Film

## PRODUCT FEATURES

**01. VHP-Resistant Disinfection**  
The product can meet the requirements of VHP space disinfection and surface alcohol wipe disinfection, ensuring compatibility with rigorous cleaning protocols.

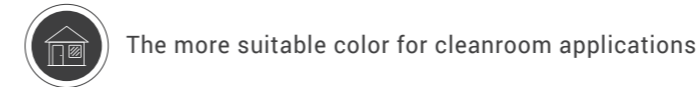
**02. Good Formability**  
It possesses excellent steel plate bending processing performance, ensuring that the paint coating remains undamaged, which helps to prolong the service life of the panels.

**03. Wear Resistance**  
During the transportation, construction, installation, and use of the panels, it reduces wear and lowers the risk of panel scratching.

**04. Environmentally Friendly**  
With small color differences and low gloss, it reduces visual fatigue caused by glare, thereby improving working efficiency and yield.

# HygiSteel® PANEL

With the rapid development of the cleanroom industry and the increasing demands for materials, Wiskind, in collaboration with Baosteel, has established a joint innovation laboratory to introduce the HygiSteel® series of color-coated steel plates specifically for cleanroom spaces. Customized color matching by Nordic color specialists ensures better compatibility with the color of white adhesives.



## PRODUCT FEATURES

**01. Gloss Reduction by 42.9%**  
Tested using a 60° specular gloss meter (GU), the White-Gray finish has a gloss level of 35±5 GU (matte), while HygiSteel® features a gloss level of 20±5 GU (low gloss), representing a 42.9% reduction in gloss. This significantly reduces glare-induced visual fatigue in cleanrooms. The low-gloss surface offers excellent diffuse reflection, providing a more comfortable visual experience.

**02. Flatness Improved by 66.7%**  
The maximum waviness of HygiSteel® is controlled within 2mm, surpassing the flatness control standards of in flatness compared to standard color-coated steel sheets. Utilizing a sandwich composite manufacturing process, HygiSteel® ensures stringent flatness requirements panel for cleanroom applications.

**03. Color Difference Control Improved by 60%**  
Compared to White-Gray, HygiSteel® achieves a 4-unit increase in L value (whiteness), enhancing color difference control by 60%. This effectively addresses the high aesthetic demands of customers requiring pure white environments and eliminates the common issue of visible color inconsistencies in compliant products.

**04. Antiviral Activity Rate >99%**  
HygiSteel® represents a breakthrough in pre-coated steel technology by incorporating silver ions (Ag\*) and antiviral agents into the coating. This results in an antiviral activity rate exceeding 99%, providing enhanced protection in cleanroom environments.

## PRODUCT SPECIFICATIONS

Item	Specifications
Width	38.58 inch, 46.46 inch
Thickness of panel surface	0.02 inch
Zinc content	3.54 ounces per square yard
Surface coating	PE, PVDF
Coating thickness	0.906 mil
Glossiness	0.79 ± 0.2 inch

Note: Non-standard specifications can be customized according to customer requirements. Flatness: Superior base sheet quality ensures a maximum wave height of 2mm, thereby guaranteeing the flatness of the panel surface.

## PCGI PANEL

PCGI powder-coated steel panels are meticulously designed for cleanroom environments, utilizing advanced electrostatic adsorption technology to achieve a uniform application of high-polymer thermosetting powder. These panels undergo a high-temperature curing process that produces a dense, durable coating with seamless adhesion. This ensures superior performance and effective contamination control in critical environments, meeting the stringent demands of cleanroom standards.

### PRODUCT SPECIFICATIONS

Item	Specifications
Width	39.37 inch / 47.24 inch
Thickness	0.02 - 0.024 inch
Coating Thickness	1.97 - 2.76 mil
Zinc Coating	Z3.54 ounces per square yard
Color	RAL9002
Color Difference	$\Delta E \leq 0.5$
Gloss	$20 \pm 5^\circ$

Note: Thickness, zinc content, and color are customizable, with consideration of production timelines.

### PRODUCT FEATURES

01.

#### High Film Thickness

The powder-coated panel achieves a single coating thickness of over 120µm. The thick coating process results in a fuller, finer surface. After high-temperature curing, the coating hardness can reach above 6H.

02.

#### High Film Thickness

The molecular weight of the powder coating is much greater than that of oil-based coatings. After curing at 330°C, a highly dense, tough coating is formed, effectively resisting corrosion and providing excellent protection for the substrate.

03.

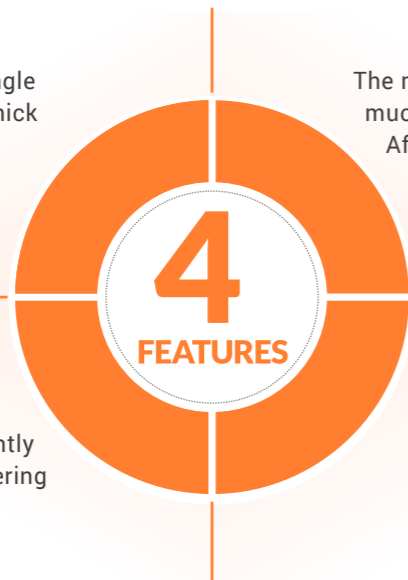
#### High Corrosion Resistance

The high-polymer powder coating, after high-temperature curing, significantly enhances acid and alkali resistance, offering 5-6 times the protection of traditional solvent-based coatings.

04.

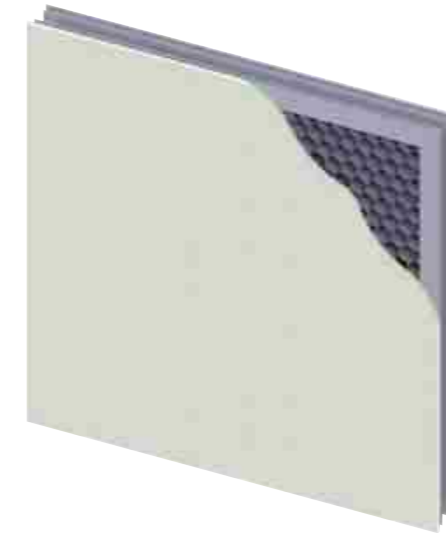
#### Zero VOCs

The high-polymer powder coating is 100% solid, with no solvent emissions during the coating and curing process, resulting in zero VOCs. It is safe and environmentally friendly.



## HPL PANEL

Compact Laminate (High-Pressure Laminate) is a premium wall material specifically designed for cleanroom applications. It is produced by pressing decorative paper and multiple layers of resin-impregnated kraft paper under high temperature and pressure. This process results in a material with low water absorption, excellent moisture resistance, and superior scratch and impact resistance. Additionally, it meets B1 fire protection standards, making it an ideal choice for environments requiring stringent safety and durability standards.



### PRODUCT SPECIFICATIONS

Item	Rockwool	Aluminium Honeycomb	PIR	EPS
Panel Weight	0.531 ounces per square yard	0.295 - 0.442 ounces per square yard	0.383 ounces per square yard	0.324 ounces per square yard
Sound Insulation	25 dB	18 dB	17 dB	None
Bending Bearing Capacity	1.1 KN/m <sup>3</sup>	1.0 KN/m <sup>3</sup>	1.44 KN/m <sup>3</sup>	-
Thermal Conductivity Coefficient	0.0065 BTU/hr·ft <sup>2</sup> ·°F	41.738 BTU/hr·ft <sup>2</sup> ·°F	0.0038 BTU/hr·ft <sup>2</sup> ·°F	0.0058 BTU/hr·ft <sup>2</sup> ·°F
Hydrophobic Rate	≥98%	-	-	-
Fire-resistant Level	A	B1	B1	B2

Note: The weight of the HPL cleanroom panel is calculated based on a thickness of 50mm.

## CLEANROOM DOOR

Wiskind has launched three series of cleanroom door products for diverse markets: steel doors, HPL doors, and color steel doors.



01.  
Steel door



02.  
HPL door



03.  
Color steel door

### STEEL DOOR

This steel door, made from high-strength 304 stainless steel, features enhanced weather and corrosion resistance due to a sand-treated surface instead of electrostatic powder coating.

#### PRODUCT SPECIFICATIONS

Item	Specifications
Standard Size	Single door: 35.43 inch * 82.68 inch, 0.28 inch * 82.68 inch; Unequal door: 47.24 inch * 82.68 inch; Double door: 59.06 inch * 82.68 inch, 70.87 inch * 82.68 inch
Door Frame Steel Plate Thickness	0.047 inch / 0.059 inch
Door Leaf Steel Plate Thickness	0.031 inch / 0.039 inch / 0.047 inch
Door Leaf Thickness	1.97 inch
Internal Filling	Flame retardant paper honeycomb / Aluminum honeycomb / Rockwool
View Glass Edge Color	Black / White
View Glass Edge Style	Outer straight inner round / Outer round inner round / Outer straight inner circle

### HPL DOOR

The door features an HPL (High-Pressure Laminate) board surface, offering bacterial resistance and durability for frequent disinfection in pharmaceutical settings, complemented by a pin edge process integrating the HPL board with an aluminum alloy frame.

#### PRODUCT SPECIFICATIONS

Item	Specifications
Standard Size	46.46 inch x 47.24 inch, 93.03 inch x 47.24 inch
Glass	Tempered, Ultra-white tempered, Fireproof, Dimming
Form Thickness	1.97 inch / 2.95 inch / 3.94 inch
Window Frame	Aluminum alloy profile / Stainless steel
Edging	Outer straight inner straight, Outer straight inner round, Outer round inner round
Internal Filling	3A molecular sieve

### COLOR STEEL DOOR

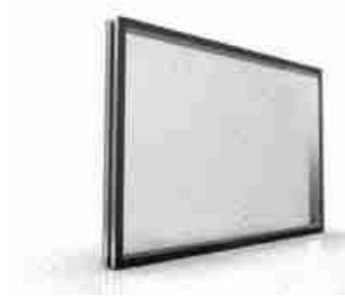
This color steel door boasts a high-strength aluminum alloy frame with clean, seamless design, enhanced strength, and corrosion resistance, featuring a color steel plate leaf for easy cleaning and no dust accumulation.

#### PRODUCT SPECIFICATIONS

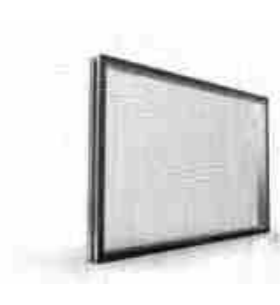
Item	Specifications
Door Leaf Material	Color steel plate / Mirror zinc plate with electrostatic resin powder coating
Door Leaf Thickness	0.02 inch / 0.024 inch
Door Frame Thickness	1.97 inch
Internal Filling	Flame retardant paper honeycomb / Aluminum honeycomb
View Glass Edge Color	Black / White
View Glass Edge Style	Outer straight inner round / Outer round inner round / Outer straight inner circle

## CLEANROOM WINDOW

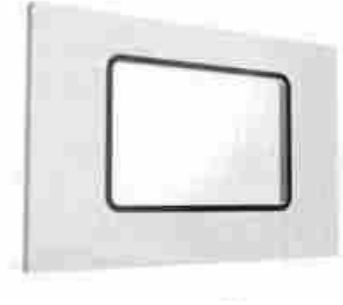
Cleanroom windows have been specially introduced for the biomedical industry, including large floor-to-ceiling windows, dimming windows, and on-panel windows. They can be customized to meet the diverse needs of our customers.



01.  
Large floor-to-ceiling windows



02.  
Dimming windows



03.  
On-panel windows

#### PRODUCT SPECIFICATIONS

Item	Specifications
Standard Size	46.46 inch x 47.24 inch, 2.36 inch x 47.24 inch
Glass	Tempered, Ultra-white tempered, Fireproof, Dimming
Form Thickness	1.97 inch / 2.95 inch / 3.94 inch
Window Frame	Aluminum alloy profile / Stainless steel
Edging	Outer straight inner straight, Outer straight inner round, Outer round inner round
Internal Filling	3A molecular sieve

Note: Non-standard specifications can be customized according to customer needs.

## MODULAR CEILING SYSTEM

The Modular Ceiling System features a modular design that offers high flexibility and versatile combinations.

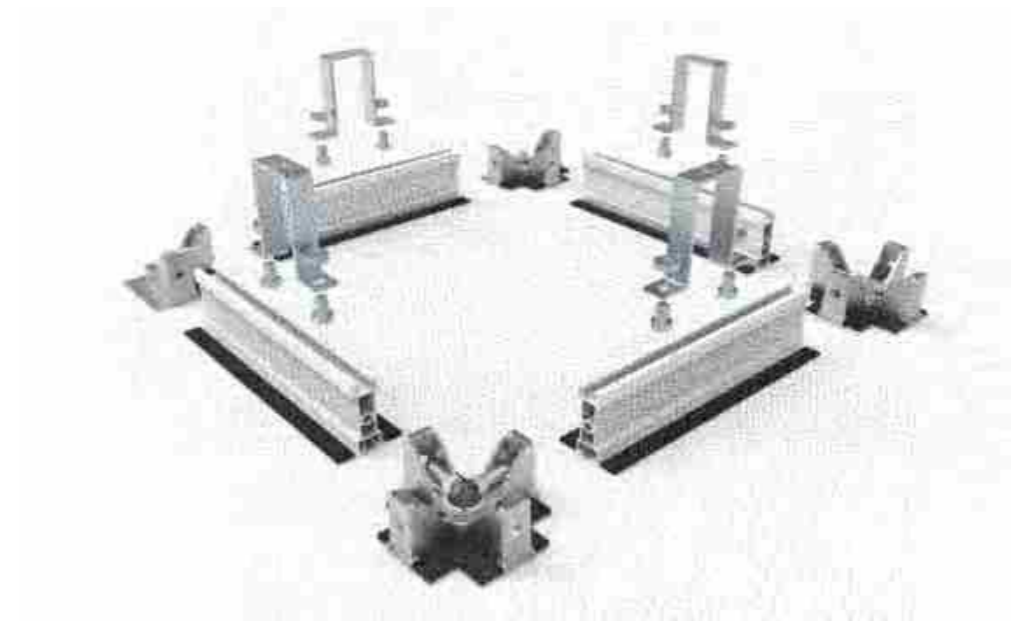


### PRODUCT SPECIFICATIONS

Blind Panel	Specifications
Panel Size	22.44 inch x 22.44 inch, 46.06 inch x 46.06 inch, 46.06 inch x 22.44 inch (custom sizes available upon request)
Panel Material	Color Steel Plate
Surface Coating	PE, PVDF, HDP
Blind Panel Thickness	0.51inch
Core Material	Aluminum Honeycomb, Gypsum

### T-Grid Ceiling

FFU, short for Fan Filter Unit, is a modular end-terminal air delivery device that features its own power source and filtration capabilities. The FFU Keel is a specialized modular ceiling material designed to support this end-terminal air delivery unit, primarily serving as the main material for blind panel ceilings. The connections between the components are secured with connectors, including cross joints, T-joints, and corner joints. The entire FFU Keel system is reinforced with threaded fasteners, creating a cohesive and integrated structure.



### PRODUCT FEATURES

- **Easy Installation** The FFU grid system is designed according to the characteristics of clean rooms, featuring simple processing, convenient assembly and disassembly, facilitating routine maintenance work after the completion of the clean room.
- **Factory Prefabrication** The ceiling system is modularly designed with great flexibility, allowing for both factory production and on-site cutting, significantly reducing construction pollution.
- **Flexible Combination** This product offers flexible combinations, allowing for the selection of a double-layer ceiling structure or the use of only the lower FFU grid for a single-layer ceiling.
- **Wide Application Range** The system is highly robust, allowing for walking on the FFU aluminum ceiling grid. It is suitable for local laminar flow systems, FFU systems, and air purification systems of different cleanliness levels, applicable to industries such as electronics, semiconductors, and pharmaceuticals.
- **Diverse Combinations** The FFU grid system is also very diverse in its composition. It can be equipped with sprinkler heads at cross joints, or with smoke detectors and lighting fixtures' wiring. Below, clean room teardrop lights can be installed, and the FFU ceiling can also be integrated with FFU fan filters.

# CLEANROOM EQUIPMENT

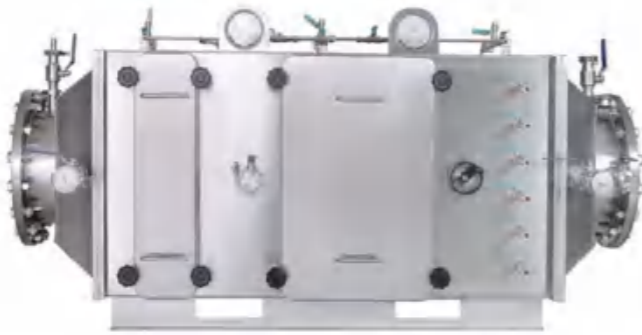
## BAG-IN / BAG-OUT HEPA FILTER HOUSING

Bag-In/Bag-Out HEPA filter housing, also known as BIBO, is a kind of high-efficient air filtration unit for air exhausting. It has excellent airtightness under a certain air pressure.

By using dedicated bags, it can also provide biosafety protection for staffs during filter replacement.

Typical applications include the nuclear industry, biochemical laboratories, fuel treatment, chemical and radioactive treatment, CDC and animal diseases research centers, hospitals and other healthcare facilities, toxic waste disposal facilities and biological laboratories.

BIBO can be used for vertical downflow and horizontal airflow environment concurrently. It can be installed as a single module, stacked vertically, or in parallel. When in operation, standard pressures are +2500 Pa and -3000 Pa respectively. Highest operating temperature is 60 °C.



## PRODUCT SPECIFICATIONS

Model	KuBo-HNH	KuBo-1CH	KuBo-4CH
Dim. (H x W x D)	27.87 x 15.87 x 21.26 inch	27.87 x 27.87 x 31.26 inch	55.75 x 55.75 x 32.83 inch
Maximum Airflow	1700 CMH/1000 CFM	3400 CMH/2000 CFM	13600 CMH/8000 CFM
HEPA Filter	H14 (EN1822)	H14 (EN1822)	H14 (EN1822)
	24.02 x 12.01 x 11.5 inch-1 pcs	24.02 x 24.02 x 11.5 inch-1 pcs	24.02 x 24.02 x 11.5 inch-4 pcs
Pre-filter	N.A	G4 (EN779)	F8 (EN779)
	N.A	N.A	N.A
Main Material	SUS	SUS	SUS
PAO Port	SUS 304, $\Phi$ 0.39 inch	SUS 304, $\Phi$ 0.39 inch	SUS 304, $\Phi$ 0.39 inch
Pressure Gauge	Optional, 0 ~ 750 Pa	Optional, 0 ~ 750 Pa	Optional, 0 ~ 750 Pa
HEPA Scanner	Optional, Manual or Automatic	Optional, Manual or Automatic	Optional, Manual or Automatic

Note: These are the parameters of standard products. Dimensions and functions are customizable.

## ROOMSIDE EXHAUST HEPA MODULE

Exhaust/return air system for bio-cleanroom application

A high capacity, scanable exhaust containment HEPA filter inside results in low pressure drop, low energy cost and long service life.

Stainless steel fully welded to ensure the air-tight robust construction.

In situ overall efficiency test capable

In situ decontamination capable

Smaller system available with installation flexibility

All service and testing done from the room side



## PRODUCT SPECIFICATIONS

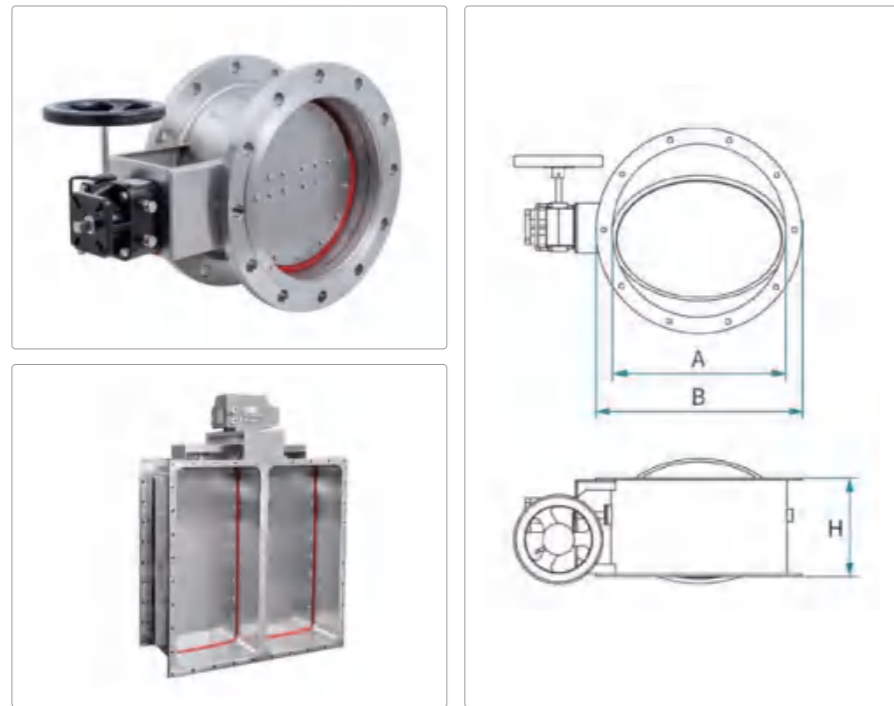
Airflow	250 CMH	500 CMH	1000 CMH
External Dim. W x D x H	14.45 x 24.29 x 16.14 inch	26.24 x 23.5 x 16.14 inch	26.46 x 35.51 x 16.14 inch
Filter Dim. W x D x H	0.14 x 0.14 x 3.7 inch	24.02 x 12.01 x 93.7 inch	24.02 x 24.02 x 3.7 inch
Duct Interface Dim. C x D	6.3 x 6.3 inch	6.3 x 7.87 inch	6.3 x 15.75 inch
Main Material	SUS 304	SUS 304	SUS 304
Pressure Gauge	Optional, 0~500 Pa	Optional, 0~500 Pa	Optional, 0~500 Pa
Leak Test	Scanner, Test Port	Scanner, Test Port	Scanner, Test Port
Sterilization port	Optional	Optional	Optional
Pressure Alarm	Optional	Optional	Optional
Dubble Tight Damper	Optional	Optional	Optional
Airflow Regulator	Optional	Optional	Optional

Note: Non-standard specifications can be customized according to customer needs.

### ■ BUBBLE TIGHT ISOLATION DAMPER

The isolation dampers are used to isolate the duct or bibo housings HEPA or carbon filters for purpose of decontamination for major alternation works, replacement fo filters, testing and air balancing.

Bubble Tight Dampers(BTD) or Air Tight dampers are of zero leakage are suitable for extremely high risk biosafety or animal biosafety Laboratories levels L3 above, radioactive, nuclear and chemical safety.



### ■ PRODUCT SPECIFICATIONS

Model	Inside Diameter (A) inch	Depth (H) inch	Outside Diameter (B) inch	Holes pcs
KuTi-MR200	7.87	7.87	11.02	8
KuTi-MR250	9.84	7.87	12.99	8
KuTi-MR300	11.81	7.87	14.96	10
KuTi-MR400	15.75	7.87	18.9	12
KuTi-MR500	19.69	7.87	22.83	16
KuTi-MR600	23.62	9.84	26.77	18
KuTi-MR700	27.56	9.84	30.71	20
KuTi-MR800	31.5	9.84	34.65	22
KuTi-MR900	35.43	11.81	38.58	26

Note: Dimensions are customizable.

### ■ AIRTIGHT PASS BOX

The airtight pass box has strong airtightness, can prevent gas permeation effectively, also allows for disinfection and sterilization of the transferred items.

It mainly used in high-level biosecurity laboratories (BSL-3, BSL-4, ABSL-3, ABSL-4) or other rooms with airtightness requirements.



### ■ DESIGN FEATURES

- The casing and connectors are made by sturdy, durable and strong resistance stainless steel 304.
- The electromagnetic interlock feature ensures that both side doors cannot be opened simultaneously.
- The airtight doors are equipped with high-quality silicone seal rings on both sides for preventing gas leakage.
- The pass box is equipped with a disinfection injection port and a disinfection verification port.
- The double-layer tempered glass window allowing for easy monitoring of the transfer process inside the box.
- The curved door design enhances aesthetics and reduces areas that are difficult to clean.
- Optional features include an illumination light and ultraviolet light, which can be set to specific sterilization and disinfection times.

### ■ PRODUCT SPECIFICATIONS

Model	KuPa Bio-AC040404T	KuPa Bio-AC060606T	KuPa Bio-AC080808T
External Dim. W x D x H	15.75 x 15.75 x 15.75 inch	23.62 x 23.62 x 23.62 inch	31.5 x 31.5 x 31.5 inch
Work Area Dim. W x D x H	2.56 x 18.5 x 25.39 inch	35.24 x 26.38 x 33.27 inch	43.11 x 34.25 x 41.14 inch
Light	>70μw/cm <sup>2</sup>	>70μw/cm <sup>2</sup>	>70μw/cm <sup>2</sup>
Material	0.079 inch, SUS 304	0.079 inch, SUS 304	SUS 304
Power Supply	AC 220 V/1 PH	AC 220 V/1 PH	AC 220 V/1 PH
Rated Power	0.402 hp	0.402 hp	0.402 hp
PAO Sampling Port	SUS 304, Φ 0.39 inch	SUS 304, Φ 0.39 inch	SUS 304, Φ 0.39 inch

Note: Dimensions and functions are customizable.

## APR DOOR

APR doors have strong airtightness, which effectively prevents gas permeation.

APR doors are commonly used in applications where high containment is required, such as BSL3 and BSL4 labs to ensure the enclosure's airtightness.



## DESIGN FEATURES

- Protective equipment for biosafety laboratories.
- There are two types of sealing methods for APR door: pneumatic and mechanical.
- Fully welded stainless steel, corrosion-resistant, easy to clean, and provides a sturdy and stable construction with excellent durability.
- Round corner structure to avoid sealing dead corners.
- Double-layer tempered glass window, providing an enhanced user experience.
- Electromagnetic lock, the door allows for interlocking between the inner and outer doors when both are in use simultaneously. When only single door is being used, the electromagnetic lock provides a secondary locking mechanism to ensure safety.
- High density corrosion-resistant inflatable gasket/sili-cone gasket.
- E-stop button and manual air release valve to ensure safety.

## VHP PASS BOX

VHP Passbox is primarily used for the transfer of materials between sterile inspection laboratories, microbiology laboratories, positive control laboratories, and material transfer rooms, sterilization of material packaging and external surface.

By utilizing an integrated VHP from generator, the passbox ensures the sterilization of non-exposed surfaces with in a low-temperature or ambient temperature environment. This sterilization process is environmentally friendly, efficient, thorough, and safe.



## PRODUCT SPECIFICATIONS

Item	Parameter
Gasification temperature	≤100 °C
Airflow direction	Vertical unidirectional flow
Sterilization cycle duration	≤90 min
Sterilization efficiency	Ig6 (Thermophilic fat spores, ATCC1298 / ATCC7953)
Filter efficiency	H14 (EN1822)
Power supply	AC 220 V/1 PH
Alarm system	High/low pressure, door-opening timeout, lock door
VHP residue level	≤1 ppm, determined by process requirements
Cleanliness (particle level)	Class B
Data integration function	Data storage and printing capability

### ■ MIST AIR SHOWER

The mist air shower is an air filtration device installed on the wall, to be used either on a routine operational basis or in emergencies. The mist air shower fine fog automated cycle is used for the encapsulation of Powders (typically APIs) usually on disposable operatives suits.

Where the operatives suits are reusable and the powder is to be removed after encapsulation, then an optional coarse fog rinse cycle may be conducted after the encapsulation or to remove the powder without impacting the suit.



### ■ PRODUCT SPECIFICATIONS

Material	Stainless Steel
Air velocity	65.62 ft/s
Water temperature	35 ± 3°C
Input power	220V 1Ph/50Hz
Filter efficiency	H13 (EN1822)
Shower duration	15 sec (Adjustable)
Airflow velocity	72.18 ft/s
Nozzles	12 pcs
Foffing duration	15 sec (Adjustable)
Water mistparticles	0.394 - 1.97 mil
Persons capacity	1 person/cycle
Gross weight	771.62 lb

Note:Dimensionsa n dfunctions are customizable.

### ■ HEPA BOX

- Ceiling-mount ducted, room-side operatable air supply module with gel-seal HEPA/ULPA filters and butterfly damper
- Quick filter change, quick upstream aerosol injection & dispersion, quick aerosol sampling and pressure test
- Good air-tight performance, connecting with duct work, suitable for air filtration ranging from 10,000k to100k cleanroom
- Stainless steel fully welded to ensure air-tight housing



### ■ PRODUCT SPECIFICATIONS

Model	Airflow (CMH)	Housing Dim. (inch)	Filter Dim. (inch)	Inlet Dim. (inch)
Top Inlet and Side Gel				
KUDO03PT	300	14.37 x 14.37 x 9.84	12.01 x 12.01 x 2.87	6.3 x 6.3
KUDO05PT	500	18.9 x 18.9 x 9.84	16.54 x 16.54 x 2.87	7.87 x 7.87
KUDO10PT	1000	27.36 x 1.92 x 9.84	25 x 20.67 x 2.87	7.87 x 12.6
KUDO15PT	1500	32.48 x 27.36 x 9.84	30.12 x 25 x 2.87	7.87 x 15.76
KUDO20PT	2000	43.11 x 27.36 x 9.84	40.75 x 25 x 2.87	9.84 x 19.69
KUDO25PT	2500	50.2 x 27.36 x 9.84	47.83 x 25 x 2.87	12.6 x 19.69
KUDO30PT	3000	50.2 x 27.36 x 9.84	47.83 x 25 x 2.87	12.6 x 24.8
Side Inlet and Side Gel				
KUDO03PS	300	14.37 x 14.37 x 15.75	12.01 x 12.01 x 3.66	6.3 x 6.3
KUDO05PS	500	18.9 x 18.9 x 15.75	16.54 x 16.54 x 3.66	7.87 x 7.87
KUDO10PS	1000	27.36 x 23.03 x 15.75	25 x 20.67 x 3.66	7.87 x 320
KUDO15PS	1500	32.48 x 27.36 x 15.75	30.12 x 25 x 3.66	7.87 x 15.75
KUDO20PS	2000	43.11 x 27.36 x 17.72	40.75 x 25 x 3.66	9.84 x 19.69
KUDO25PS	2500	50.2 x 27.36 x 20.47	47.83 x 25 x 3.66	12.6 x 19.69
KUDO30PS	3000	50.2 x 35.24 x 20.47	47.83 x 25 x 3.66	12.6 x 24.8

# CLEANROOM LIGHT

## CEILING-MOUNTED BEVELED CLEAN PANEL LIGHT



- **Light Guide Plate** Professional-grade optics ensure uniform light diffusion, achieving high efficiency at 100lm/w.
- **Light Source** The cleanroom lighting uses specialized imported chips, with a blue light hazard rating of RG0. The harmonics comply with national standards, and the light decay meets the U.S. LM80 standard.
- **DC Low-Voltage Plug-in Terminal** Provides safe power access, ensuring easy installation and maintenance.
- **Structure** Streamlined design allows for seamless installation without gaps, preventing dust accumulation and maintaining airflow in cleanrooms.
- **Stainless Steel I-Beam Support** Ensures secure installation with minimal gaps (less than 2mm), enhancing overall panel strength.
- **Backplate** High-strength steel guarantees the lamp's durability and stability.
- **Craftsmanship** Adopts advanced powder coating technology for excellent surface treatment.
- **Edge Frame Material** Made from 6063 aviation-grade aluminum.
- **Protection Level** Special sealing technology ensures IP54 compliance, maintaining a clean environment.

No Blue Light Hazard

No Visible Flicker

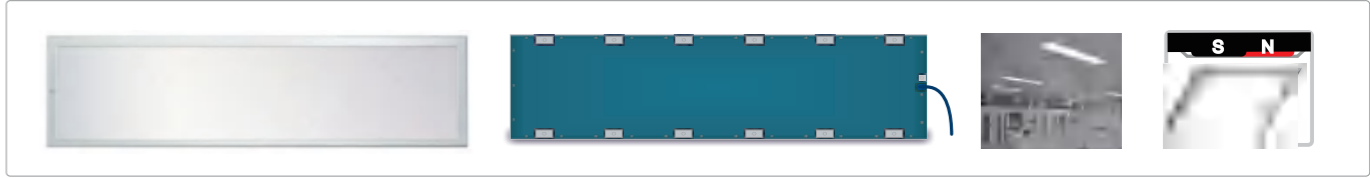
Adjustable Brightness and Wavelength

Eye Protection and Anti-Glare

## PRODUCT SPECIFICATIONS

Product Dimensions (inch)	Power	Luminous Flux (LM)	Luminous Efficacy (LM/W)	Color Temperature (K)	Color Rendering Index (Ra)	Protection Level
9.45 x 9.45 x 0.43	15W	1650				
9.45 x 23.62 x 0.43	26W	2860				
9.45 x 46.06 x 0.43	36W	3960				
23.62 x 46.06 x 0.43	56W	6160				
23.62 x 23.62 x 0.43	36W	3960	110	3000/4500/6500	≥82	IP54
	56W	6160				
23.62 x 46.06 x 0.43	56W	6160				
	80W	8800				

## CEILING-MOUNTED BEVELED CLEAN PANEL LIGHT



- **Light Guide Plate** Professional optical-grade light guide plate, with high uniformity of light output and overall light efficiency exceeding 100lm/w.
- **Light Source** Imported chips specially for cleanroom lighting, blue light level is RG0, harmonics comply with national standards, and lumen maintenance meets the American LM80 standard.
- **Anti-fall Rope** The light fixture is equipped with an anti-fall design to prevent the light fixture from falling off due to instantaneous impact or other accidents during high-intensity construction in sandwich layers.
- **Structure** Streamlined structural design, after installation, the surface is uniformly smooth without sharp corners or seams, does not accumulate dust or collect dust, and does not affect the laminar flow in the clean room.
- **Protection Level** Using a unique sealing process, the conventional protection can reach IP54 to meet the use in various clean environments, facilitating disinfection and cleaning.
- **Backplate** High-strength galvanized steel plate, ensuring the overall strength of the light fixture and impact resistance.
- **DC Low Voltage Pluggable Terminals** Human safety voltage, no risk of electric shock, easy and quick installation and maintenance.
- **Magnetic Suction Installation** The light fixture comes with a permanent strong magnet, which can be closely attached to the metal wallboard, with the installation gap less than 1mm, making installation and maintenance easy.
- **Frame Material** 6063 aviation aluminum alloy.
- **Process** Using nanotechnology spraying, ensuring resistance to corrosive gases and reagents such as hydrogen peroxide/ethanol/phenol disinfection.

No Blue Light Hazard

No Visible Flicker

Adjustable Brightness and Wavelength

Eye Protection and Anti-Glare

## PRODUCT SPECIFICATIONS

Product Dimensions (inch)	Power	Luminous Flux (LM)	Luminous Efficacy (LM/W)	Color Temperature (K)	Color Rendering Index (Ra)	Protection Level
9.45 x 9.45 x 0.43	15W	1650				
9.45 x 23.62 x 0.43	26W	2860				
9.45 x 46.06 x 0.43	36W	3960				
300 x 46.06 x 0.43	56W	6160				
23.6 x 23.6 x 0.43	36W	3960	110	3000/4500/6500	≥82	IP54
	56W	6160				
23.6 x 46.06 x 0.43	56W	6160				
	80W	8800				

### LED WATERPROOF CLEAN PANEL LIGHT



- **Frame** Made from 6063 aviation aluminum alloy, processed and formed with nano-spray technology, suitable for various corrosive environments. The beveled edge design facilitates easier cleaning of the installation contact surface, eliminating the risk of dust accumulation.
- **Waterproof Gasket** The front and back cavities of the light fixture are sealed with a double-layer gasket, with a protection rating of IP67, allowing for full body water washing and full waterproof design.
- **Custom Waterproof DC Connector** Customized waterproof DC connectors are sturdy and reliable, ensuring no water ingress risk at the light fixture's wiring hole.
- **Clamp** Professionally customized clamps, the entire lamp is assembled without screws, ensuring even force on the backplate and no dark areas on the light-emitting surface.

**Basic Function**  
Fixed LED waterproof clean light, meeting the lighting needs of clean rooms

**Usage Places**  
Pharmaceutical factories, food processing workshops, electronic factories, and other clean rooms, or other indoor places that require waterproof and anti-corrosion

No Blue Light Hazard

No Visible Flicker

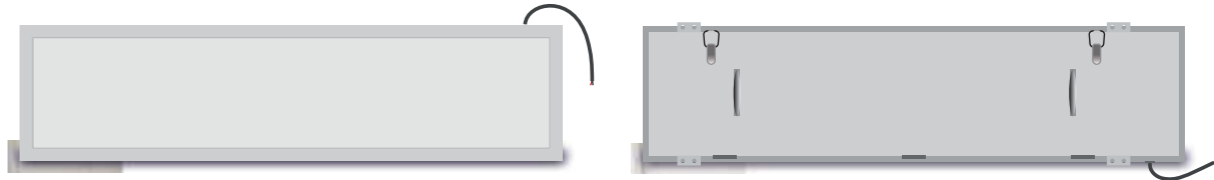
Adjustable Brightness and Wavelength

Eye Protection and Anti-Glare

### PRODUCT SPECIFICATIONS

Product Dimensions (inch)	Power	Luminous Flux (LM)	Luminance (LM/W)	Color Temperature (K)	Color Rendering Index (Ra)	Protection Rating
9.45 x 9.45 x 0.47	12W	1320	110	2800k-3200k 4000k-4500k 6500k-7000k	≥82	IP67
9.45 x 23.62 x 0.47	26W	2860				
9.45 x 38.58 x 0.47	36W	3960				
9.45 x 46.06 x 0.47	56W	6160				
18.9 x 18.9 x 0.47	36W	3960				
18.9 x 18.9 x 0.47	56W	6160				
18.9 x 46.06 x 0.47	72W	7920				

### RECESSED FLANGED CLEAN LIGHT



- **Power Supply** The built-in power supply design eliminates the need for additional protection and safety concerns for the power source on the ceiling board, allowing the light fixture to directly use the AC220V mains power.
- **Light Source** Imported chips specifically for cleanroom lighting, with a blue light level of RG0, harmonics that comply with national standards, and lumen maintenance that meets the American LM80 standard.
- **Protection Level** With a unique sealing process, the regular protection can reach IP54, suitable for use in various clean environments, facilitating disinfection and cleaning.
- **Backplate** High-strength galvanized steel plate, ensuring the overall strength of the light fixture and impact resistance.
- **Structure** The backlight design is used, resulting in higher light efficiency.
- **Edge Flanging** The flanging design effectively covers the cutting surface, ensuring a neat and aesthetically pleasing installation surface.
- **Frame** Made from 6063 aviation aluminum alloy in one piece, ensuring the strength of the light body.
- **Wiring** The wiring from both sides of the fixture makes the installation site neater and safer.

No Blue Light Hazard

No Visible Flicker

Adjustable Brightness and Wavelength

Eye Protection and Anti-Glare

### PRODUCT SPECIFICATIONS

Product Dimensions (inch)	Aperture Size (inch)	Power	Luminous Flux (LM)	Luminance (LM/W)	Color Temperature (K)	Protection Rating	Light Emitting Color
12.4 x 12.4 x 4.21	11.22 x 11.22	15W	1650	110	4500/6500	IP54	Monochrome (natural light)
25 x 12.4 x 4.21	23.82 x 11.22	25W	2750				
47.05 x 12.4 x 4.21	45.87 x 11.22	40W	4400				
47.05 x 12.4 x 4.21	45.87 x 11.22	60W	6600				
22.52 x 22.52 x 4.21	21.3 x 21.3	40W	4400				
22.52 x 22.52 x 4.21	21.3 x 21.3	60W	6600				
22.52 x 22.52 x 4.21	21.3 x 21.3	80W	8800				
27.24 x 27.24 x 4.21	26.06 x 26.06	100W	11000				
27.24 x 27.24 x 4.21	26.06 x 26.06	150W	16500				
47.05 x 12.4 x 4.21	45.87 x 11.22	80W	8800				
47.05 x 14.76 x 4.21	45.87 x 13.58	100W	11000				
47.05 x 14.76 x 4.21	45.87 x 13.58	150W	16500				

# BIOMEDICAL CLEANROOM ENCLOSURE SYSTEM SOLUTIONS

Wiskind continues to explore new materials, new technologies, and new solutions, providing customers with comprehensive solutions for the cleanroom enclosure system in the biomedical industry. This includes partition walls, ceilings, doors, windows, profiles, etc. We employ the spirit of craftsmanship to refine our products and demonstrate courage in technical innovation. Wiskind strives for customers' convenience, trust, and satisfaction.



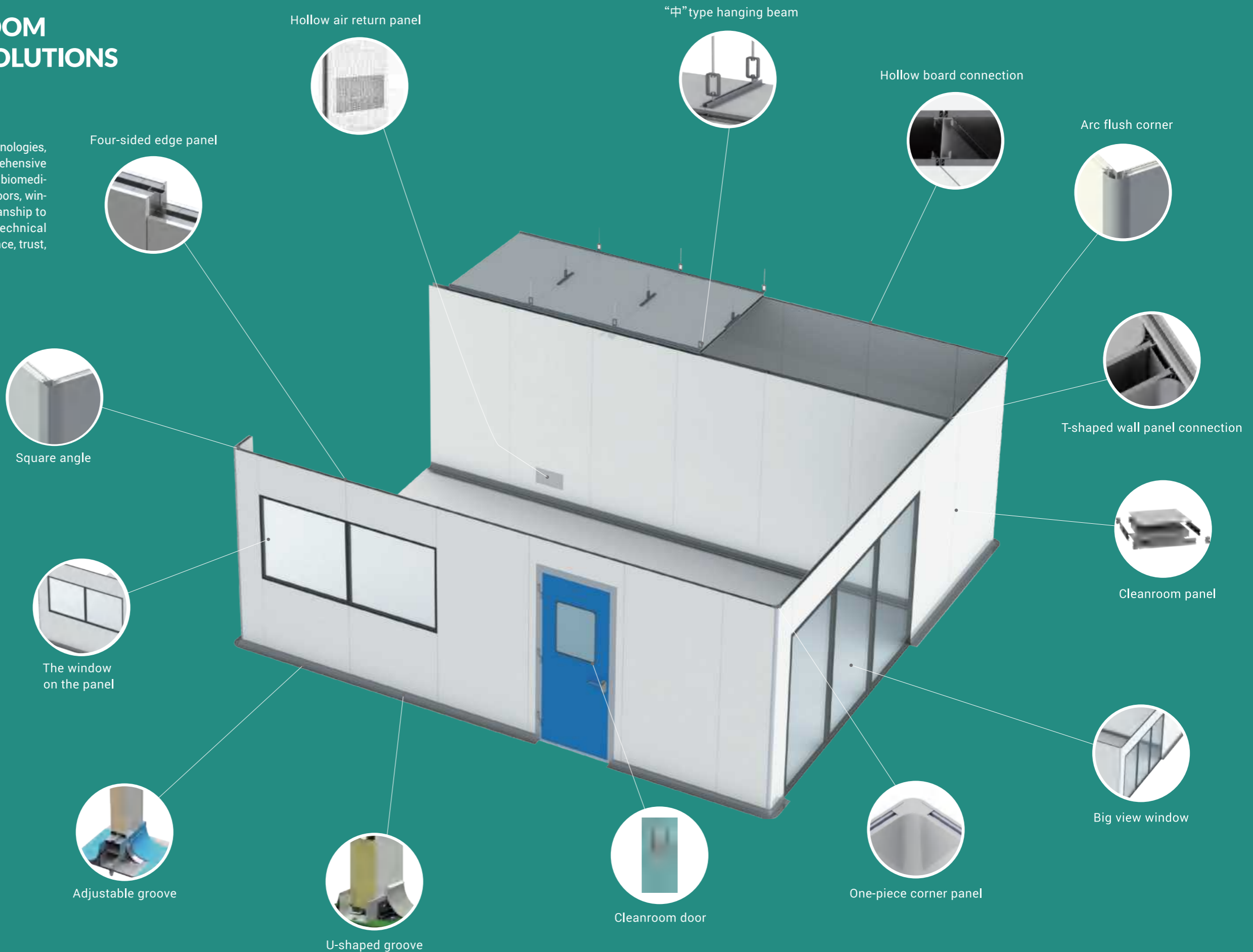
Wiskind can provide customized or modular envelope design, utilizing intelligent design to complete both facade and 3D design schemes. This approach achieves an accurate structural construction plan, which helps to reduce the risk of indoor cracks and leakage.



Wiskind excels at leveraging the distinct characteristics of various materials, designing solutions tailored to customers' style requirements for comprehensive factory expansion plans. We integrate industrial aesthetics to make the production environment more Pleasant and user-friendly.



Considering the process equipment and users' habits, we conduct reasonable optimizations to maximize the practicality and efficiency of users' operations.



# ONE-PIECE CORNER PANEL



01. T-shape corner      02. Right-corner      03. Round-corner

## PRODUCT SPECIFICATIONS

Item	Specifications
Width	The sum of the widths of both sides should not exceed 46.46 inch, with either side being no less than 3.94 inch. Suggested size: 12.4 inch × 12.4 inch
Maximum Length	236.22 inch
Thickness	1.97 inch / 3.94 inch
Thickness of Panel Surface	0.016 inch - 0.024 inch
Panel Surface	Color-coated steel plate, Aluminum alloy plate, Stainless steel plate, Ti-Zn plate, Endure, Hygisteel
Surface Coating	PE, PVDF, HDP
Core Material	Rockwool (Bulk density: 6.24 - 7.49 lb/ft³)
Frame Thickness	0.024 inch
Corner	0.020 inch (Galvanized)
Protective Film	2.36/3.15 mil

## PRODUCT FEATURES

**01. Smooth Corner Design**  
The corner position is smooth and flat, with no joint transitions. This ensures a more rigorous interface, eliminating air leakage and the accumulation of dust at joints, which facilitates easier cleaning and disinfection.

**03. Detachable Technology for Maintenance**  
Combined with Wiskind's patented detachable technology, the one-piece corner panel can be disassembled separately for daily maintenance, offering convenience and flexibility.

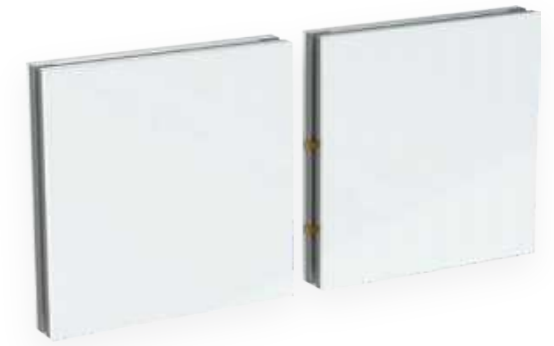


**02. Thermal Insulation**  
The one-piece corner panel is specially insulated to effectively avoid the thermal bridge effect common in traditional corners.

**04. Patented Innovation**  
The one-piece corner panel is a patented product of Wiskind.

# REMOVABLE PANEL

During the construction and use of cleanroom panels, local damage is inevitable, requiring replacement and maintenance. Additionally, changes in process equipment often necessitate adjustments to the cleanroom layout, which may involve removing specific walls. However, traditional cleanroom panels are challenging to disassemble locally, causing inconvenience for both the construction team and the owner. Wiskind's rapid detachable technology effectively addresses these issues.



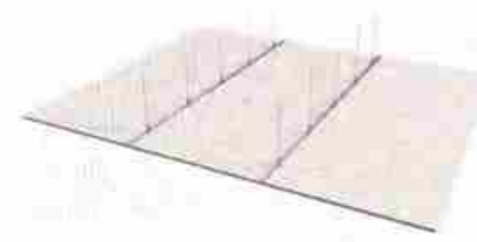
## PRODUCT SPECIFICATIONS

Item	Specifications
Width	38.58 inch / 46.46 inch
Maximum Length	354.33 inch; ceiling panels must not exceed 118.11 inch
Thickness	1.97 inch / 2.95 inch / 3.94 inch
Panel Surface Thickness	0.016 inch - 0.024 inch
Core Material	Rockwool (Bulk density 6.24 - 7.49 lb/ft³), MGO board, Gypsum board, Aluminum honeycomb, Paper honeycomb
Frame Thickness	0.024 inch - 0.031 inch
Corner	0.02 inch (Galvanized)

## PRODUCT FEATURES

- No need to remove all the walls; reduces the cost of replacing panels and is more cost-effective.
- This product is more suitable for cleanroom equipment reserved ports and reserved vulnerable areas.
- No color difference, improving the overall cleanroom aesthetics.
- Patented technology in China

## REMOVABLE CEILING PANEL



# AIR RETURN WALL UNIT

Wiskind has enhanced the installation efficiency and connection methods for air outlets, addressing the challenges associated with traditional return air units. These challenges include large area occupation, poor sealing effects, susceptibility to core material exposure, and construction difficulties.

The Wiskind 100mm hollow air return wall panel effectively replaces the return air column and 100mm-thick hollow spring wall typically used in buffer rooms for changing clothes. With an average return air volume of 500m<sup>3</sup>/h, this panel optimizes the utilization of cleanroom space.

Our return air module is prefabricated in the factory for convenient and swift direct installation on-site, significantly improving construction efficiency.

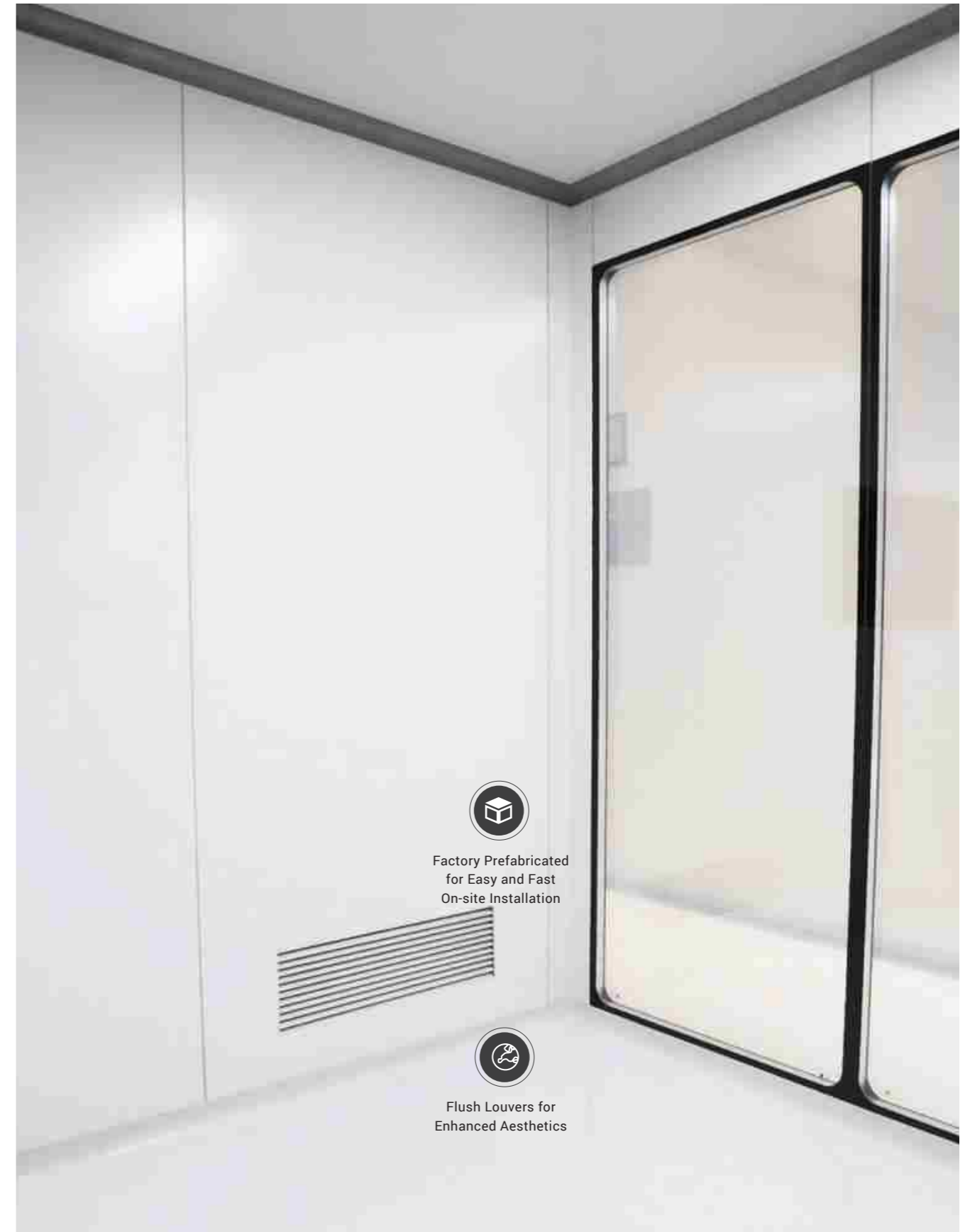
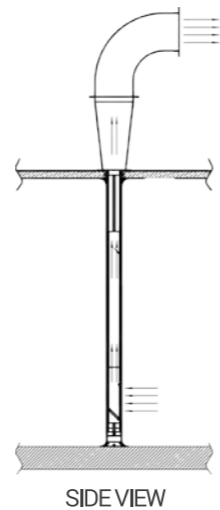
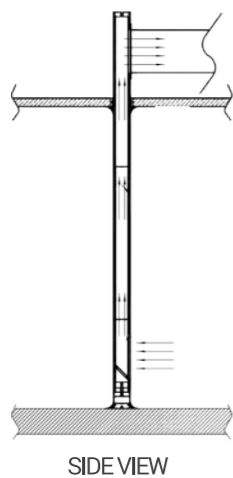


## PRODUCT SPECIFICATIONS

Item	Specifications
Width	38.58 inch / 46.46 inch
Maximum Length	236.22 inch
Thickness of Panel Surface	0.02 inch
Panel Surface Material	Color-coated steel plate, Stainless steel plate, Endure Plate, VCM PE (Polycool), PVDF (Krypton Carbon), HDP (Weather-resistant Polycool)
Core	Gypsum (0.47 inch), Aluminum honeycomb
Average Return Air Volume (Width 1180mm)	2201.43 - 4402.87 gmp
Average Return Air Volume (Width 980mm)	1761.15 - 3522.29 gmp

Note: Non-standard specifications can be customized according to customer needs.

## INSTALLATION NODE



Factory Prefabricated for Easy and Fast On-site Installation



Flush Louvers for Enhanced Aesthetics

# INDUSTRIAL CLEANROOM ENCLOSURE SYSTEM SOLUTIONS

## Electronic Application

Electronic cleanroom enclosure system solutions are specifically designed for the high-tech industry, aiming to provide a dust-free and sterile production environment to meet the strict requirements of precision manufacturing. This system primarily controls dust particles in the air to ensure that the work objects are free from contamination, hence it is also referred to as a dust-free room or clean workshop.

Electronic cleanrooms are widely applied across various industries, including but not limited to the electronics industry (such as semiconductors, integrated circuits, etc.), aerospace, precision machinery, precision instruments, high-purity chemicals, nuclear energy, opto-magnetic products, and liquid crystal glass manufacturing.



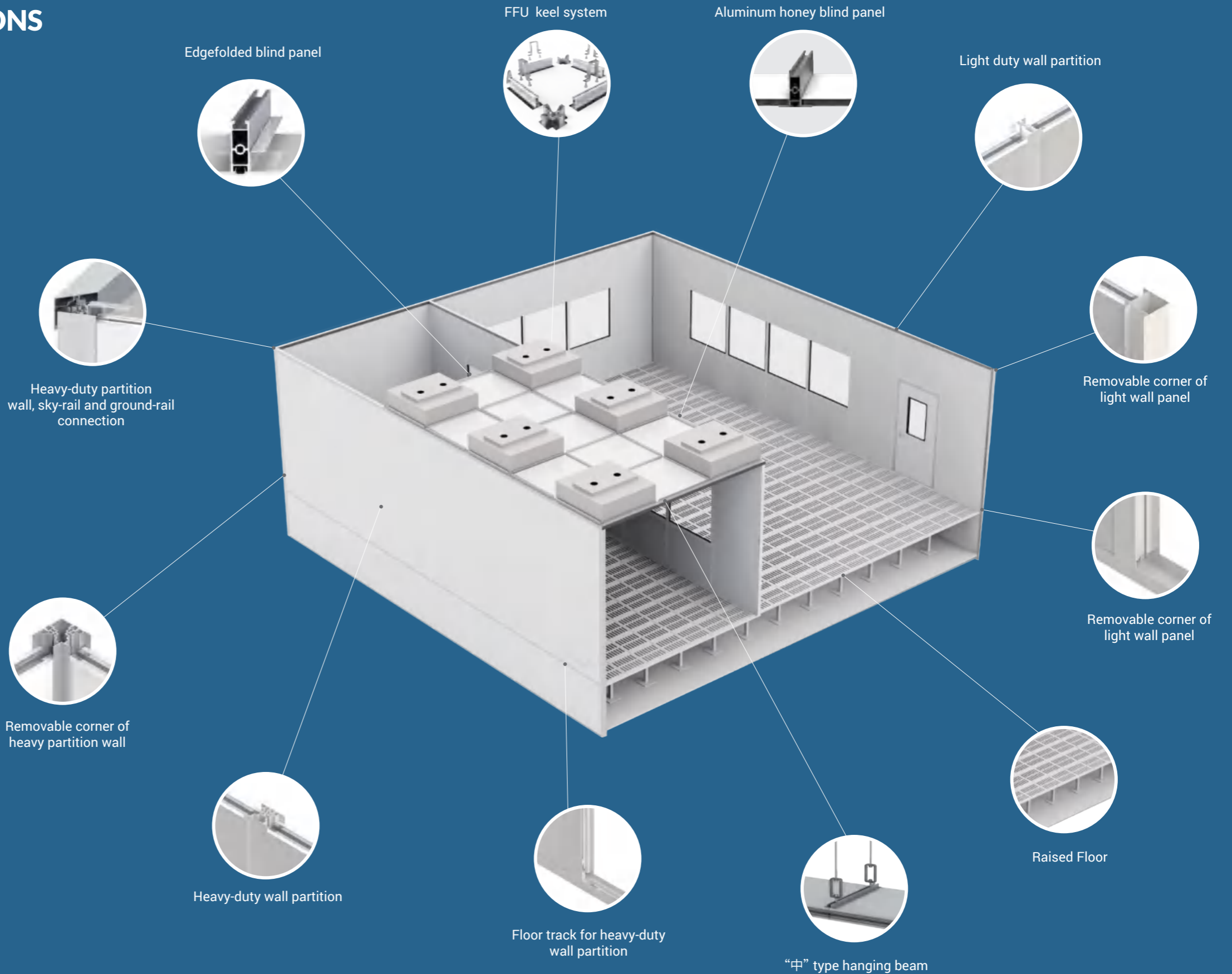
Wiskind can provide customized or modular envelope design, utilizing intelligent design to complete both facade and 3D design schemes. This approach achieves an accurate structural construction plan, which helps to reduce the risk of indoor cracks and leakage.



Wiskind excels at leveraging the distinct characteristics of various materials, designing solutions tailored to customers' style requirements for comprehensive factory expansion plans. We integrate industrial aesthetics to make the production environment more pleasant and user-friendly.



Considering the process equipment and users' habits, we conduct reasonable optimizations to maximize the practicality and efficiency of users' operations.



# INDUSTRIAL CLEANROOM ENCLOSURE SYSTEM SOLUTIONS

## Food Safety Application

With the increasing attention of consumers to food safety and quality, the standards for production environments in the food industry are also continuously being raised. Wiskind, with its profound accumulation and rich experience in the field of cleanroom technology, has meticulously researched and developed a set of food safety cleanroom enclosure solutions tailored specifically for the food industry.



Wiskind can provide customized or modular envelope design, utilizing intelligent design to complete both facade and 3D design schemes. This approach achieves an accurate structural construction plan, which helps to reduce the risk of indoor cracks and leakage.



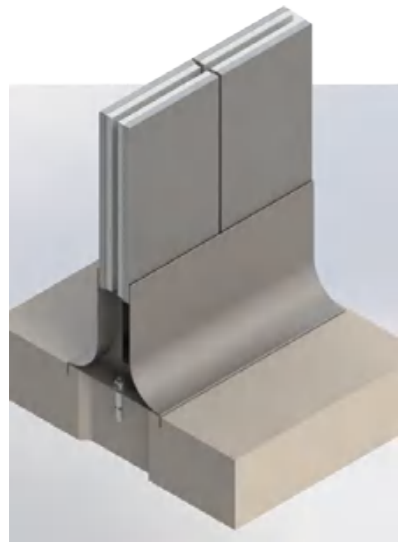
Wiskind excels at leveraging the distinct characteristics of various materials, designing solutions tailored to customers' style requirements for comprehensive factory expansion plans. We integrate industrial aesthetics to make the production environment more pleasant and user-friendly.



Considering the process equipment and users' habits, we conduct reasonable optimizations to maximize the practicality and efficiency of users' operations.



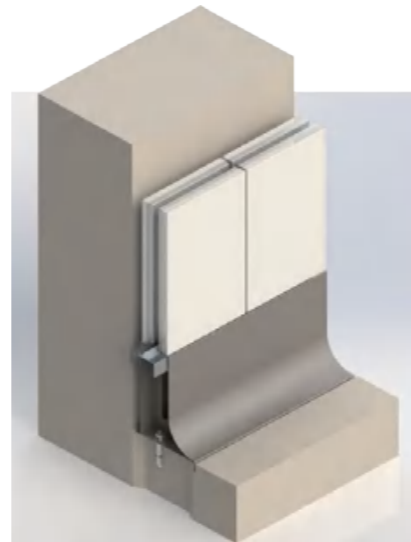
# STAINLESS STEEL WATERPROOF WALL BASE



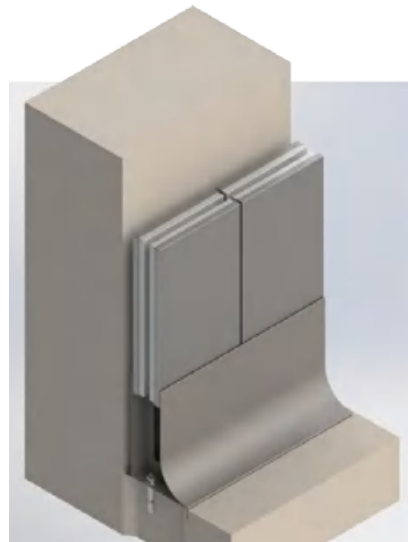
01. Waterproof footing of wall with stainless steel panel



02. Waterproof footing of wall with color-coated panel



03. Waterproof footing of wall single arc continuous color coated panel



04. Waterproof footing of wall single arc with stainless steel panel



05. Waterproof footing of wall with hanging panel

## PRODUCT SPECIFICATIONS

Item	Specifications
Appearance Height	6.3 inch
Bottom Width	7.09 inch
Material	304 Stainless Steel
Outer Stainless Steel Thickness	0.039 inch
Middle Positioning Stiffener Thickness	0.059 inch
Ground Slotting	0.12 inch x 0.59 inch

Note: Non-standard specifications can be customized according to customer requirements.

## PRODUCT FEATURES

**01. Corrosion Resistance**  
Our product is designed to resist corrosion from substances such as acids, alkalis, and blood, ensuring a long service life.

**02. Enhanced Waterproofing**  
The product's excellent waterproof qualities significantly reduce the risk of damage to cleanroom panels from scouring. It is extensively utilized in food processing areas for tasks including scouring, cleaning, and disinfection, effectively preventing issues such as bulging and peeling paint.

**03. Aesthetics and Durability**  
The product is not only beautiful and elegant but also highly reusable. The wall panels are seamlessly integrated, leaving no gaps, which helps to prevent bacterial growth.

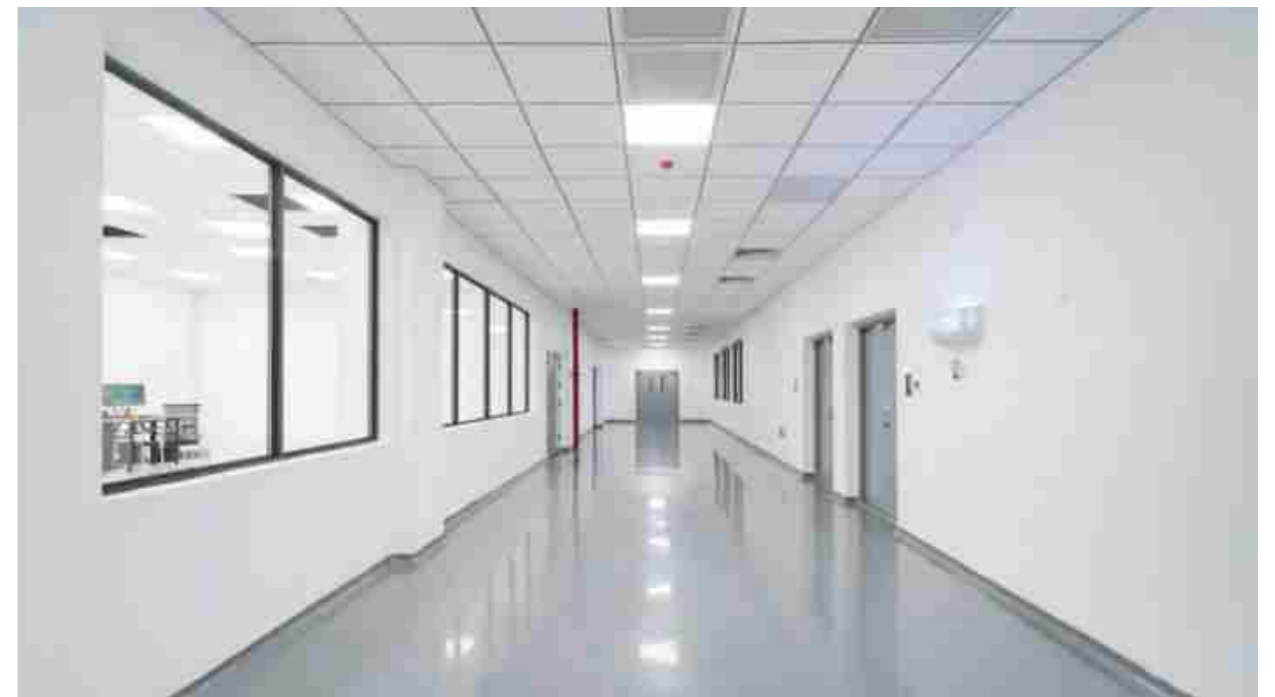
**04. Easy Installation**  
The product offers easy and flexible installation, making it a practical choice for various applications.



# CASES

---







# OUR PARTNERS



